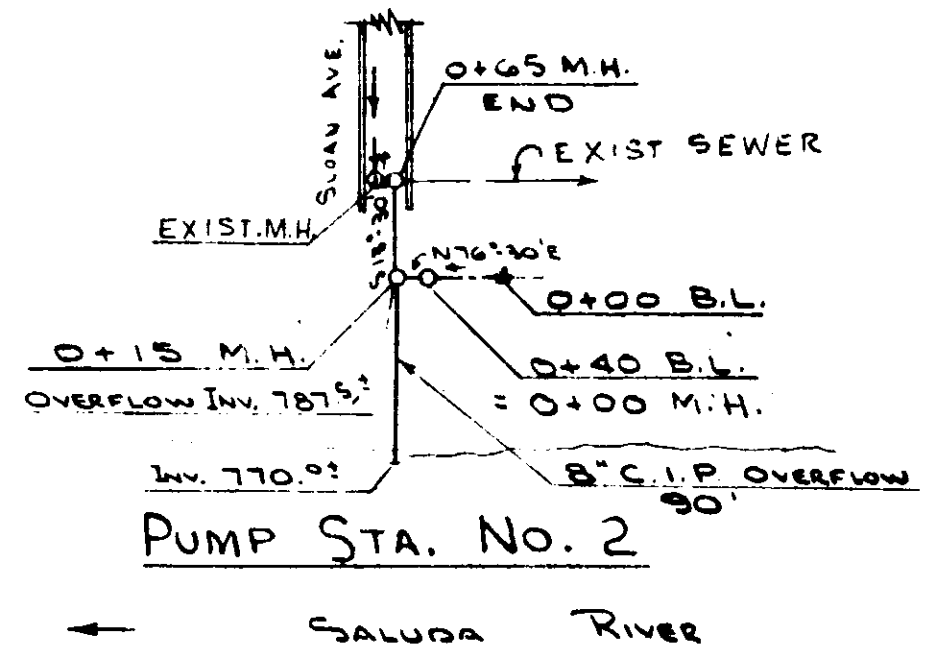
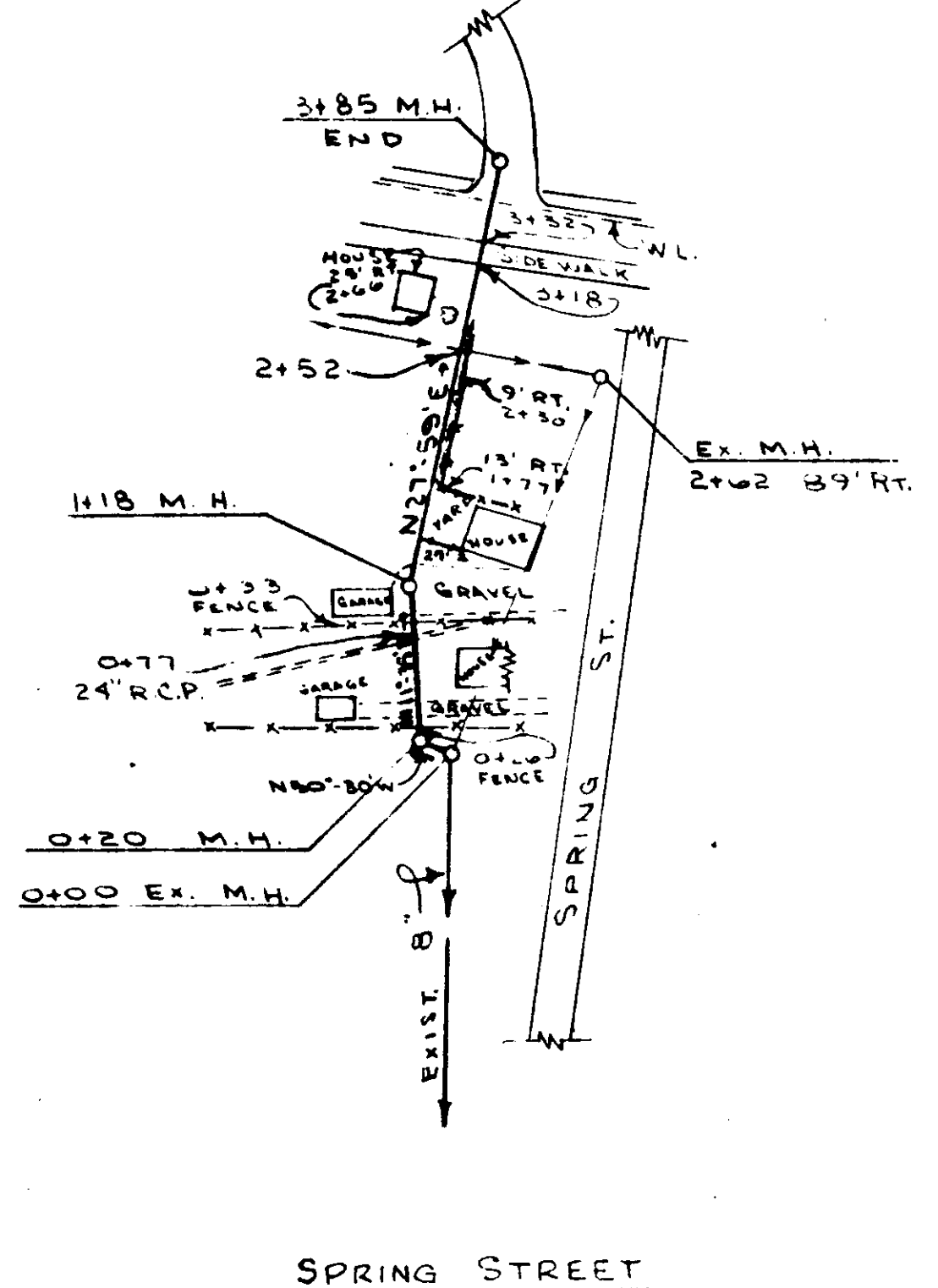
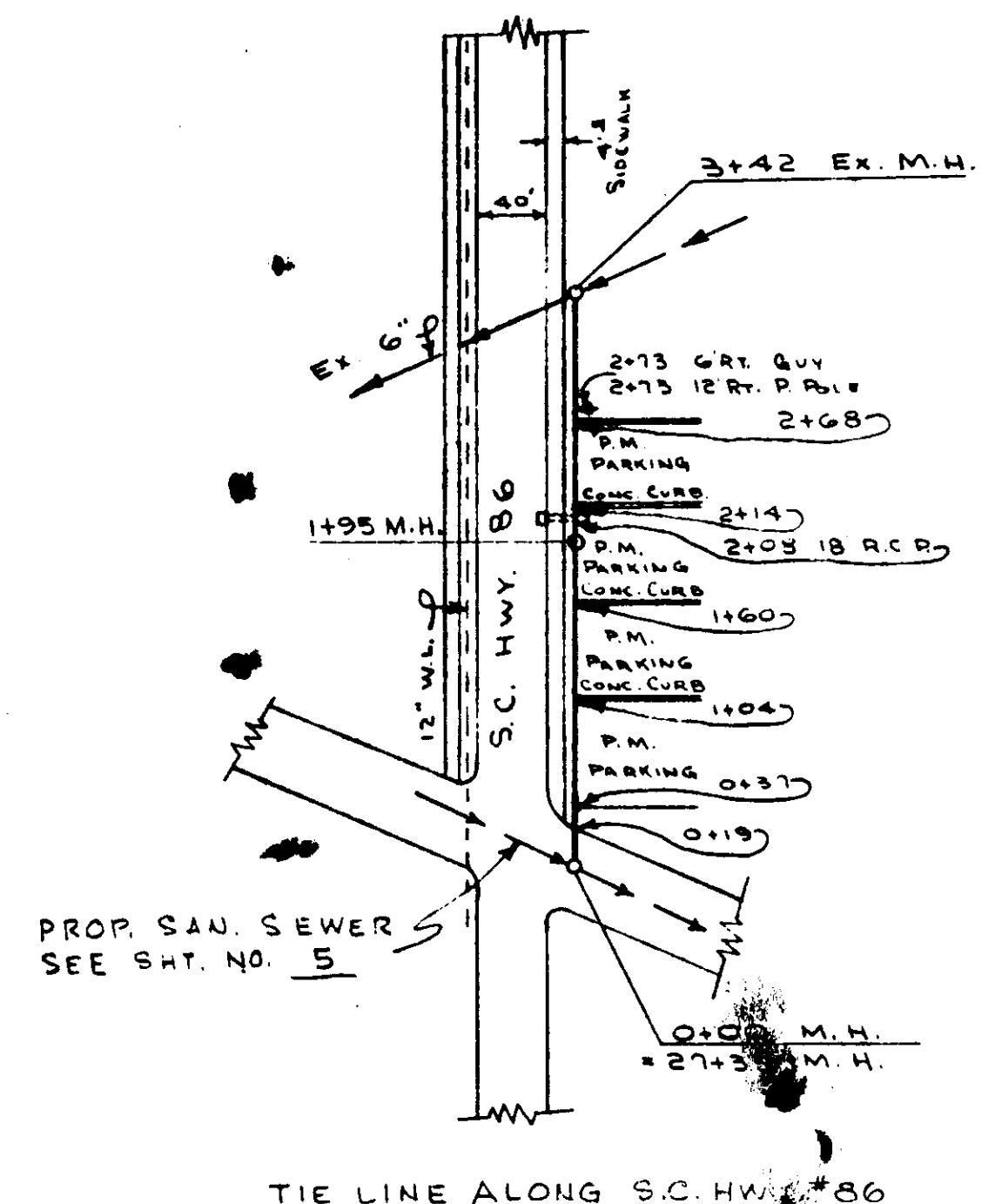
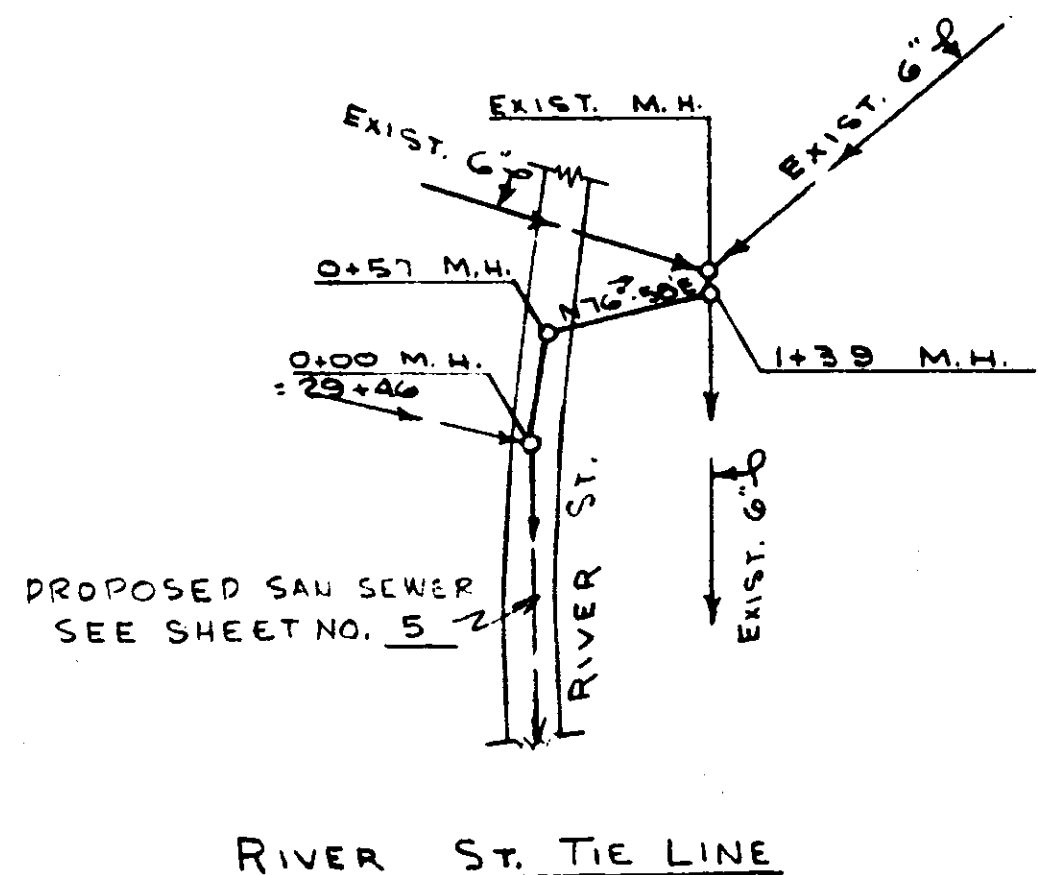
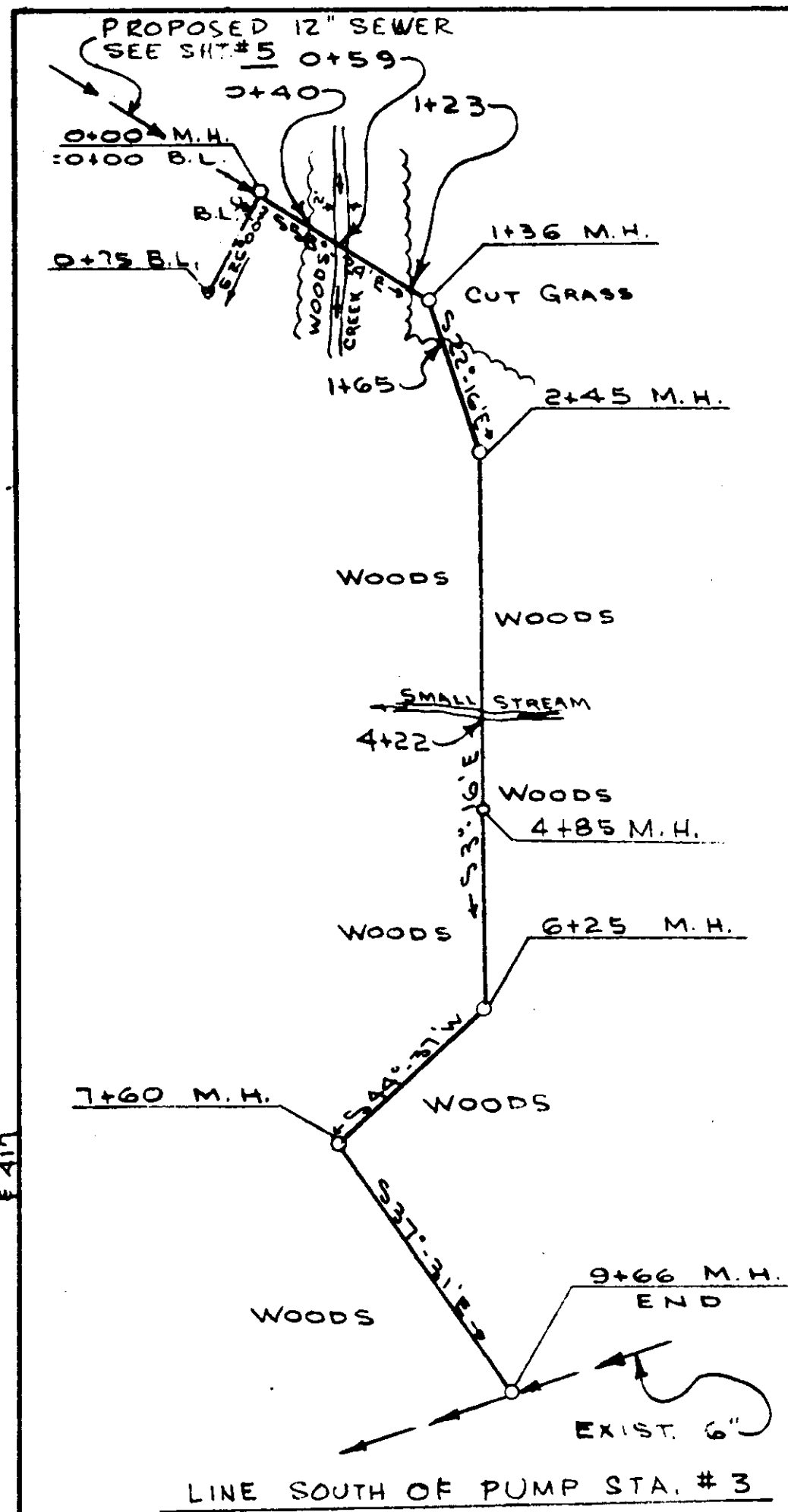
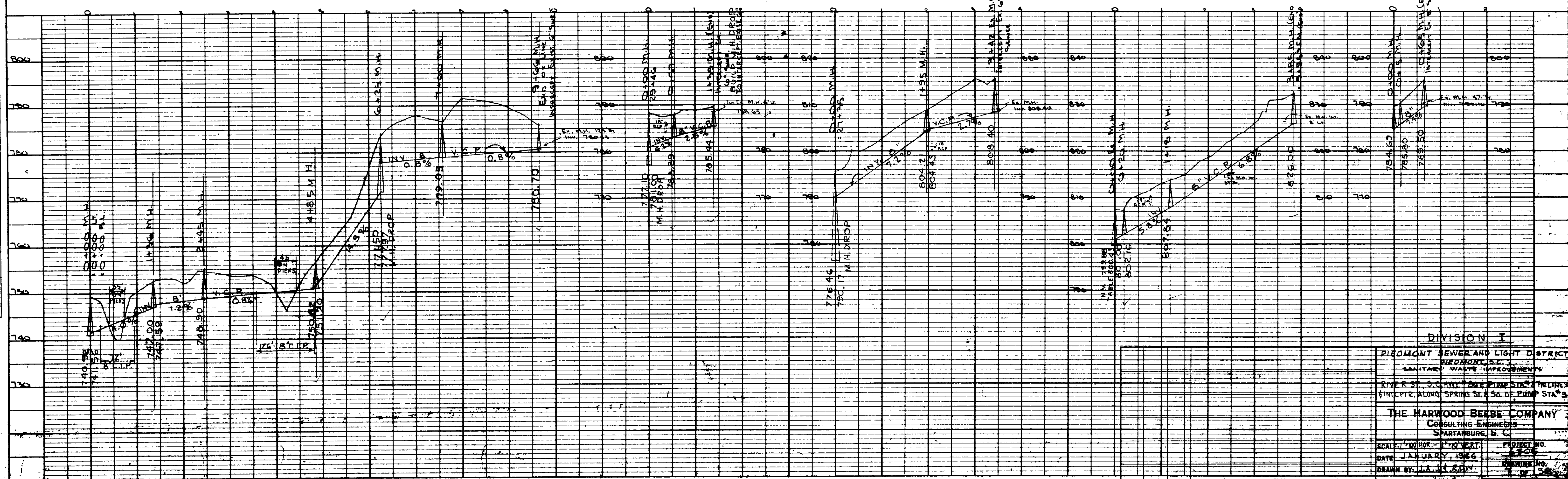


PLAN	DATE
APPROVED BY: J.A.V.	1/1/56
DESIGNED BY: J.A.V.	1/1/56
CHECKED BY: J.A.V.	1/1/56
PROJECT NO. 413	
DATE: 1/1/56	



PROFILE	DATE
APPROVED BY: J.A.V.	1/1/56
DESIGNED BY: J.A.V.	1/1/56
CHECKED BY: J.A.V.	1/1/56
PROJECT NO. 413	
DATE: 1/1/56	



DIVISION I	
PIEDMONT SEWER AND LIGHT DISTRICT	
SANITARY WASTE IMPROVEMENTS	
RIVER ST., S.C. HWY. #86 PUMP STA. TIE LINES	
ENTRANCE ALONG SPRING ST. S. OF PUMP STA. #3	
THE HARWOOD BERBE COMPANY	
CONSULTING ENGINEERS	
SPARTANBURG, S. C.	
SCALE: 1" = 10' HOR. - 1" = 10' VERT.	PROJECT NO. 413
DATE: JANUARY 1956	DRAWING NO. 1 OF 5
DRAWN BY: J.A.V.	APPROVED BY: J.A.V.
NO.	DATE BY REVISION